



NTS WFO ELIGIBILITY

NFS TRANSLOAD SHIPMENTS

Reinhard Friske
WCO



a subsidiary of The Babcock & Wilcox Company

Eligibility Determinations for NTS Disposal

The purpose of the NTS Eligibility Protocol is to provide guidance for **acceptance of wastes from facilities that are not clearly owned and/or operated by DOE**. Decisions regarding the eligibility for disposal of low-level radioactive and mixed wastes (LLW and MLLW) at the NTS must be made **based upon a clear and unambiguous connection (nexus) between the waste stream and a DOE-funded project, DOE-performed operation, DOE-owned material/waste, or project whose waste disposition is directed by Statute.**



a subsidiary of The Babcock & Wilcox Company

Eligibility Determinations for NTS Disposal

NTS is authorized to accept classified low-level radioactive materials from Department of Defense (DoD) sites.

This process is applicable to all facilities that are not owned and/or operated by DOE or its direct contractors and that generate LLW or MLLW – including Work for Others projects involving other Federal agencies, their direct contractors, or private organizations.





a subsidiary of The Babcock & Wilcox Company

Eligibility Determinations for NTS Disposal

All documentation packages prepared to support DOE nexus determinations are submitted to NNSA/NSO. Following a satisfactory review by the NNSA/NSO Environmental Management organization, the information package is forwarded to the NNSA/NSO Legal Counsel for final concurrence.

Legal review by the NNSA/NSO and EM Headquarters is the final step in this process.



NUCLEAR FUEL SERVICES, INC.
a subsidiary of The Babcock & Wilcox Company

WORK FOR OTHERS ELIGIBILITY CRITERIA

1- Does the waste contain material generated at a DOE-owned or DOE-operated site or facility?

YES:

- *NFS OBTAINS ITS FEED MATERIAL FROM DOE SOURCES*





NUCLEAR FUEL SERVICES, INC.

a subsidiary of The Babcock & Wilcox Company

WORK FOR OTHERS ELIGIBILITY CRITERIA

- 2- Was the waste derived from any site or facility operated by or sponsored by the Atomic Energy Commission or a successor entity?
- a) Naval Vessel decommissioning?
 - b) Weapons activities including enrichment of uranium or plutonium?
 - c) Verification or testing of nuclear weapons technology?
 - d) Defense nuclear weapons production or disassembly?
 - e) Defense nuclear waste and by-products management?
 - f) Defense nuclear materials security and safeguards and security Investigations?
 - g) Defense research and development projects?



NUCLEAR FUEL SERVICES, INC.
a subsidiary of The Babcock & Wilcox Company

WORK FOR OTHERS ELIGIBILITY CRITERIA


- 3- Is the site of origin (source) of the waste known and documented?
 - a) Where did the material become radioactive?
 - b) What was the purpose of the process that generated the waste?
 - c) At what point in the process was the waste generated?
 - d) How was the waste managed after generation (including any treatment, storage, or burial)?
 - e) Are viable commercial disposal options available for any of the waste streams?



NUCLEAR FUEL SERVICES, INC.
a subsidiary of The Babcock & Wilcox Company

WORK FOR OTHERS ELIGIBILITY CRITERIA

- 4- Was the waste or material derived from DoD defense activities or programs through which it requires protection as classified and is it in a condition where it cannot reasonably be destroyed, deformed, or defaced to remove or destroy the classified nature of the waste for disposal purposes?

 - 5- If the waste was derived from a site that conducted DOE defense and civilian atomic energy activity, is it feasible to segregate the wastes into commercial and defense components?
- 
- A solid blue horizontal bar spans the width of the slide at the bottom.




NUCLEAR FUEL SERVICES, INC.

a subsidiary of The Babcock & Wilcox Company

WORK FOR OTHERS ELIGIBILITY CRITERIA

- 6- Does the US Government retain title to the uranium or any other material associated with the waste stream?

 - 7- Has the DOE accepted formal responsibility for disposal of any wastes or materials associated with the site or location being remediated?
 - a) Is the DOE designated under a Memorandum of Understanding/Agreement (MOU/MOA) as a primary disposal authority for the wastes being generated?
 - b) Are any of the wastes being generated acceptable for commercial (including Compact) disposal?
- 
- A solid blue horizontal bar spans the width of the slide at the bottom.



NUCLEAR FUEL SERVICES, INC.

a subsidiary of The Babcock & Wilcox Company

WORK FOR OTHERS ELIGIBILITY CRITERIA

8- Has Congress specified through legislative language that the DOE is responsible for disposal of any wastes (including classified wastes for which disposal is assigned to the DoD)?

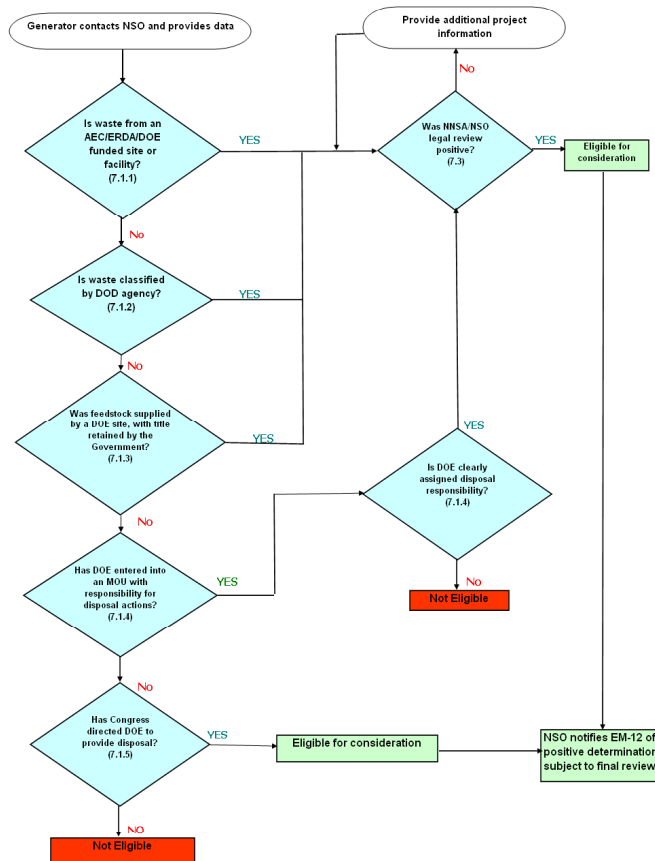


NUCLEAR FUEL SERVICES, INC.
a subsidiary of The Babcock & Wilcox Company

WORK FOR OTHERS ELIGIBILITY CRITERIA

Exhibit 1. NTS Eligibility Flowchart

Note: Citations in parentheses refer to relevant paragraphs in the RWAP Instruction for NTS eligibility.



Decision Flow Chart -- NTS Eligibility



a subsidiary of The Babcock & Wilcox Company

MHF-LS TRANSLOAD FACILITY

- NFS HAS BEEN USING THE FACILITY FOR ABOUT 2 YEARS.
- SHIP 4-SEALANDS PER FLAT RAILCAR FROM ERWIN, TN to PARKER, AZ
- MHF TRANSLOADS SEALANDS TO FLATBED TRUCKS
- MHF COMPLETES CONTAINER INSPECTIONS, SURVEYS, TIE-DOWNS, BOL, AND NTS SHIPPING INSTRUCTIONS TO NFS CHECKLIST CRITERIA. ALLOWS FOR COMPLETE CONTAINER AND NTS LABELING INSPECTION PRIOR TO NTS DELIVERY.
- ABOUT 270 miles FROM PARKER TO MERCURY
- LOAD DAY PRIOR TO NTS 7am NEXT DAY DELIVERY
- RETURN TO PARKER DAY OF NTS DELIVERY FOR LOADING
- TYPICALLY TRANSLOAD 8-SEALANDS PER MONTH
- MAX TRANSLOAD WAS 20-SEALANDS IN ONE WEEK



NUCLEAR FUEL SERVICES, INC.

a subsidiary of The Babcock & Wilcox Company

MHF-LS TRANSLOAD FACILITY

☐ MHF TRANSLOAD OFFICE





NUCLEAR FUEL SERVICES, INC.

a subsidiary of The Babcock & Wilcox Company

MHF-LS TRANSLOAD FACILITY

SEALANDS ON RAILCAR





NUCLEAR FUEL SERVICES, INC.

a subsidiary of The Babcock & Wilcox Company

MHF-LS TRANSLOAD FACILITY

❑ NIGHT TIME TRUCK LOADING





NUCLEAR FUEL SERVICES, INC.

a subsidiary of The Babcock & Wilcox Company

MHF-LS TRANSLOAD FACILITY

❑ SYD WORKING....

